

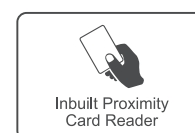
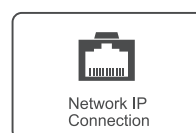
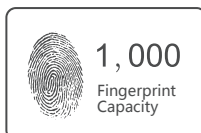
# T5 Pro

Fingerprint & RFID Access Control



## Exquisite Access Control Device

T5 Pro is the most compact access control device controller which suitable for installing on door frame. It is combined with biometric fingerprint and RFID Card for higher security requirement. With master cards, you can register or delete users under offline state. USB power supply and debug make operations simple. The most cost effective and efficient choice for you.



# BioNANO - The core algorithm

BioNano is applied in all Anviz biometric-based products used for identification.



- Independent research and development
  - Suitable for both wet and dry fingers
  - Automatically heals the broken lines in fingerprint images
  - Extraction of features in worn fingerprints
- Fingerprint template auto update

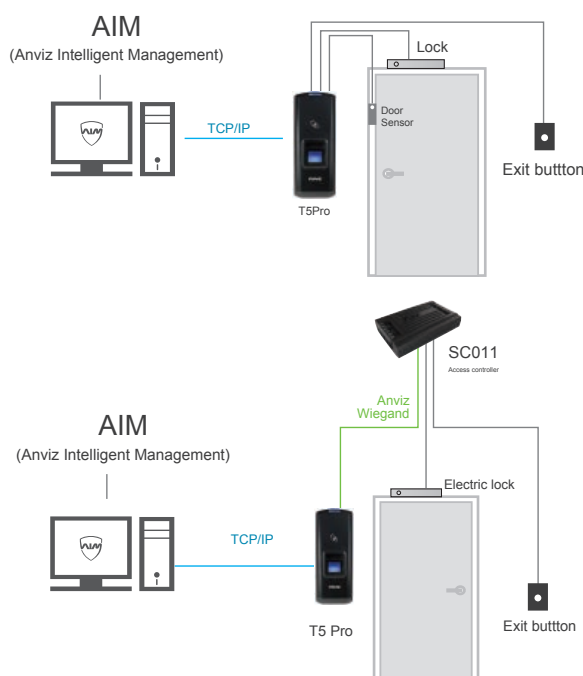
## Technical Specifications

Item	Description
Processor	TI Stellaris® 32-Bit High Speed CPU
Optical Sensor	AFOS Optical Sensor
Auto Sensor Wake Up Mode	Yes
Scan Area	22mmx18mm
Resolution	500 DPI
Fingerprint Capacity	1000
Log Capacity	50000
Identification Mode	FP, Card, FP+Card
Identification Time	<0.5s
FRR	0.001%
FAR	0.00001%
Communication Interface	RS485, USB Plug & Play, TCP/IP
Card Reader Module	Standard EM RFID, Optional Mifare Card
Relay	1 Relay
Certificate	FCC, CE, ROHS
Wiegand	Wiegand26 Output
Door Open Sensor	Yes
Size(LxWxH)	145mmx55mmx37mm

## Features

- ▶ Small size with compact design
- ▶ Easy installation
- ▶ New generation sensor – hermetic, waterproof and dustproof
- ▶ BioNANO core fingerprint algorithm: High Performance and Reliability
- ▶ Easy user enrollment on the unit via Master Card or in the management software
- ▶ Identification mode: Fingerprint, Card, Fingerprint + Card
- ▶ Compatible with industrial standard RFID EM & Mifare
- ▶ Communicate with computer via TCP/IP, RS485 and Mini USB port
- ▶ Directly connect to lock control and door open sensor as a standalone access controller
- ▶ Standard Wiegand26 output
- ▶ Optional waterproof cover for outdoor solution
- ▶ Various communications(TCP/IP, RS485) are appropriate for multiple network deployment

## Network Topology Illustration



## CrossChex Time Attendance and Access Control Management System



- Employee**  
Unify Employee management
- Device**  
Quick Add, Easy Setting
- Shift**  
Manual and intelligent shift schedule
- Export**  
Flexible and Practical Report output



Easy to Operate



Simple to Install



Enhanced Security



Types of Reports